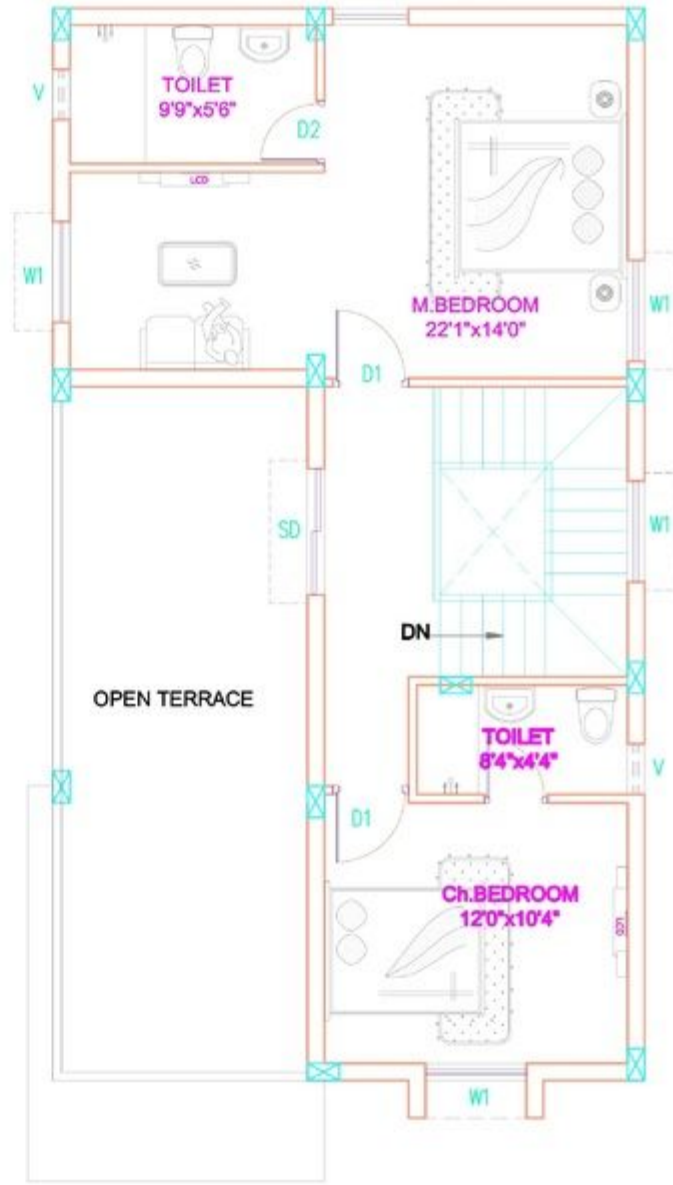


GROUND FLOOR PLAN

NORTH FACING 180 Sq.yds
TYPE - VIII

AREAS:

GROUND FLOOR AREA : 884.00 Sq.ft
 PORTICO AREA : 170.00 Sq.ft
 FIRST FLOOR AREA : 701.00 Sq.ft
 TOTAL : 1755.00 Sq.ft



FIRST FLOOR PLAN

OPTION-I